

**Harbour-front Enhancement Committee
Sub-committee on Harbour Plan Review**

**Hong Kong Island East Harbour-front Study -
Progress Report and Stage 1 Public Engagement Programme**

Purpose

1. The purpose of this Paper is to:
 - (a) report on progress and inform Members of the revised scope and requirements of the Hong Kong Island East Harbour-front Study (the Study);
 - (b) brief Members on the Stage 1 Public Engagement Programme (PEP) of the Study; and
 - (c) seek Members' initial views on their visions and aspirations on enhancement of the Hong Kong Island East harbour-front.

Progress of the Study

2. On 21 May 2008, we briefed the Sub-committee on the proposed study framework of the Study (Paper No. 12/2008). The overall objective of the Study is to formulate a comprehensive plan for enhancement of the Hong Kong Island East harbour-front with a view to transforming it into an attractive, accessible, vibrant and sustainable waterfront for public enjoyment, whilst maintaining its economic functions. Members generally supported the proposed study framework and offered some specific comments/suggestions on various aspects.

3. Taking into account the Sub-committee's comments and other comments received, we have revised the scope and requirements of the Study. Major revisions include:

(a) Extension of the Study Area

The original Study Area covers about 115ha of harbour-front land from the immediate east of the "Comprehensive Development Area" site in Oil Street and abutting the eastern boundary of the WDII

Review extending eastward up to the eastern limit of Victoria Harbour in Shau Kei Wan¹. In response to the comments received, in particular those from the Eastern District Council (EDC), the Study Area (**Plan 1**) has now been extended beyond the Harbour Limit through the Hong Kong Museum of Coastal Defence to Heng Fa Chuen and Siu Sai Wan (with a total area of about 200ha), with the main aim to improving the pedestrian linkage along this part of the harbour-front. Members may wish to focus on issues within the Harbour Limit. If follow-up on district planning matters in areas outside the Victoria Harbour (i.e. the extended Study Area) is needed, Planning Department (PlanD) will deal with it with relevant parties, say, the EDC, separately.

(b) Study Focus

Emphasis will be on enhancing the connectivity and pedestrian accessibility to the harbour-front. In addition to the creation of a continuous waterfront promenade along the Study Area (including the construction of a boardwalk underneath the Island Eastern Corridor), the Study will examine the possibility of providing cycling facilities along the harbour-front. Opportunity will also be explored to design a barrier-free waterfront promenade and integrate nearby open space into the overall promenade design framework with enhancement measures proposed as appropriate. Various means to enhance accessibility from both landward and seaward sides to the harbour-front will also be examined.

The Study will also identify key sites which may have potential for enhancement and formulate an urban design framework and associated enhancement measures based on the current statutory planning framework. Opportunity will also be taken to identify temporary enhancement measures and quick-wins for early implementation.

(c) PEP as Separate Assignment

A 3-stage PEP of the Study will be carried out as a separate assignment to tie in with the study programme. In this regard, PlanD has already appointed *The Centre of Architectural Research for*

¹ The boundaries of Victoria Harbour are stipulated in Schedule 3 of Cap. 1: "On the east – A straight line drawn from the westernmost extremity of Siu Chau Wan Point to the westernmost extremity of Ah Kung Ngam Point (sometimes known as Kung Am). On the west – A straight line drawn from the westernmost point of Island of Hong Kong to the westernmost point of Green Island, thence a straight line drawn from the westernmost point of Green Island to the south-easternmost point of Tsing Yi, thence along the eastern and northern coast lines of Tsing Yi to the westernmost extremity of Tsing Yi and thence a straight line drawn true north therefrom to the mainland."

Education, Elderly, Environment and Excellence Ltd. (in collaboration with the Community Participation Unit of Department of Architecture, the Chinese University of Hong Kong) to carry out the Stage 1 PEP. Details of the Stage 1 PEP are set out in paragraphs 5 to 7 below. To facilitate public engagement throughout the study process, the Sub-committee and the Planning, Works and Housing Committee (PWHC) of the EDC have kindly agreed to be the supporting organizations of the PEP.

4. An updated flow chart showing the key tasks of the Study is at **Annex 1**. The consultants selection exercise of the Study is in progress. It is anticipated that consultants can be appointed in early May 2009 to provide inputs to the Study which is scheduled for completion in 18 months by the latter half of 2010. An updated outline study programme is at **Annex 2**.

Stage 1 PEP

5. To engage the public in the planning process early, PlanD will kick-start the Stage 1 PEP of the Study in late March 2009. Stage 1 PEP aims at soliciting initial views from key stakeholders on the major issues and key areas of concern as well as their visions, aspirations and suggestions on enhancement of the Study Area. Comments received will provide ready input for the consultants to work on the study proposals upon their appointment in May 2009.

6. Various public engagement activities have been planned for the Stage 1 PEP, which include:

(a) Brainstorming Workshop

A brainstorming workshop will be held on 5 April 2009 at the Aldrich Bay Community Hall. Invitation to attend the event will soon be issued to various organizations and relevant stakeholders including the Town Planning Board (TPB), HEC, EDC, professional institutes, academics, local business operators, developers, green groups, concern groups, the local communities, etc. The workshop will adopt a place-making method. Key issues and core elements related to enhancement of the Study Area will be identified. The existing strengths, weaknesses, opportunities and threats will be discussed. The participants will develop their vision for the Study Area.

(b) Questionnaire Survey

A questionnaire survey will be conducted from late March till mid April 2009 to collect views of local residents and relevant stakeholders on the visions or ideas they may have on enhancement of the Hong Kong Island East harbour-front. The survey will be conducted through various means such as on-street interview, mailing to relevant parties and uploading onto the study webpage.

(c) “Envisioning for the East” Drawing Campaign

A drawing campaign will be undertaken with a view to promoting public participation and fostering creative ideas on harbour-front enhancement. The target participants are families with children. Winning/outstanding entries will be posted on the study webpage and exhibited in the Brainstorming Workshop and other engagement events to arouse public interest.

(d) Consultation with Relevant Statutory and Advisory Bodies

In addition to the Sub-committee, the TPB and the PWHC of the EDC will also be briefed on the updated progress of the Study and consulted as part of the Stage 1 PEP.

7. A dedicated webpage for the Study has been designed and will soon be launched to promote wider publicity and keep members of the public informed of the progress of the Study. Upon completion of the Stage 1 PEP, a report consolidating the findings of public engagement activities will be prepared and uploaded onto the webpage for public viewing.

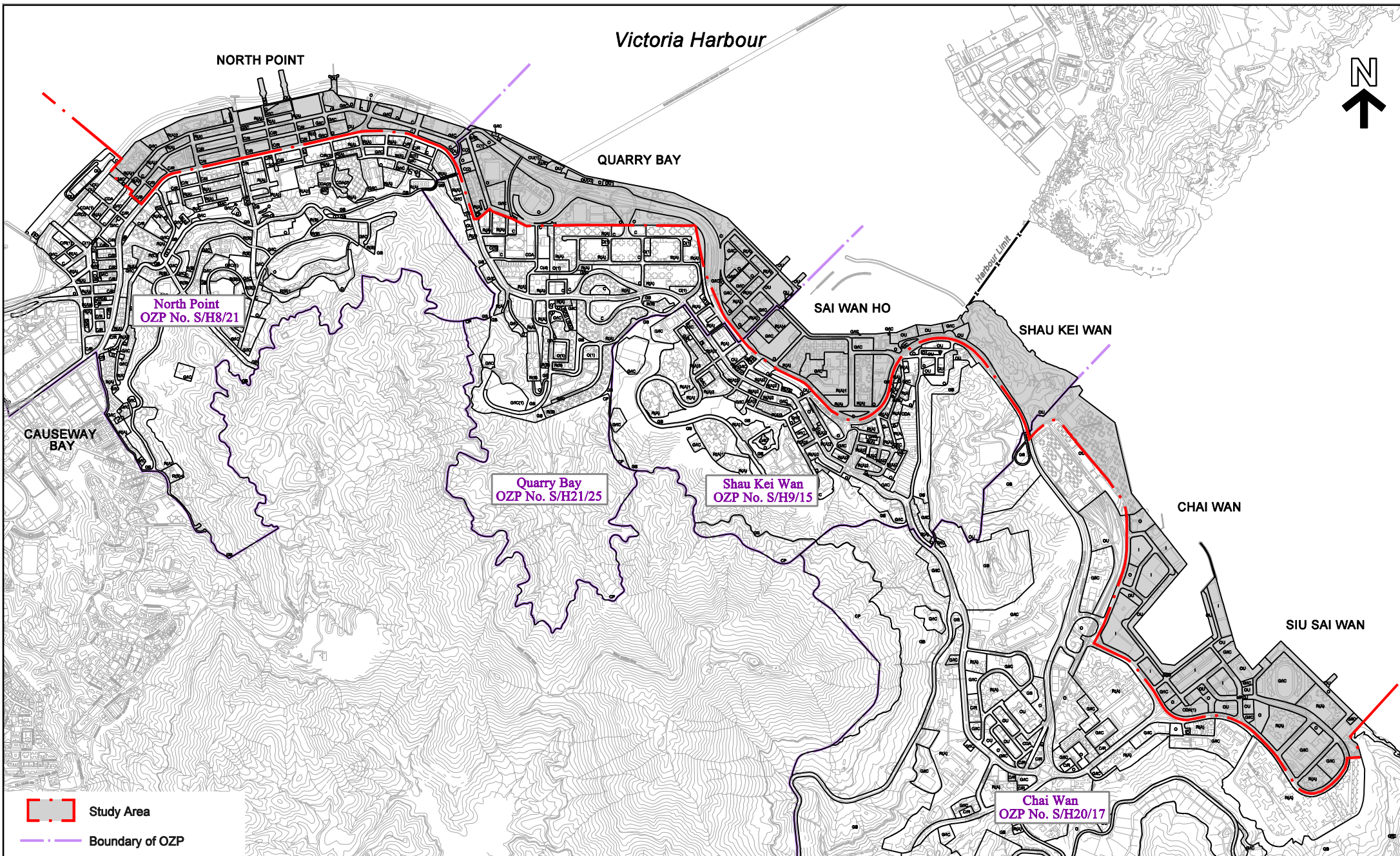
Advice Sought

8. Members are invited to note the progress of the Study and details of the Stage 1 PEP, and provide comments and suggestions on enhancement of the Hong Kong Island East harbour-front.

Attachments

Plan 1	Study Area
Annex 1	Flow chart of Key Tasks
Annex 2	Outline Study Programme

Planning Department
March 2009



Agreement No. CE 61/2008 (TP)
 Hong Kong Island East Harbour-front Study - Feasibility Study

Study Area



PLANNING DEPARTMENT

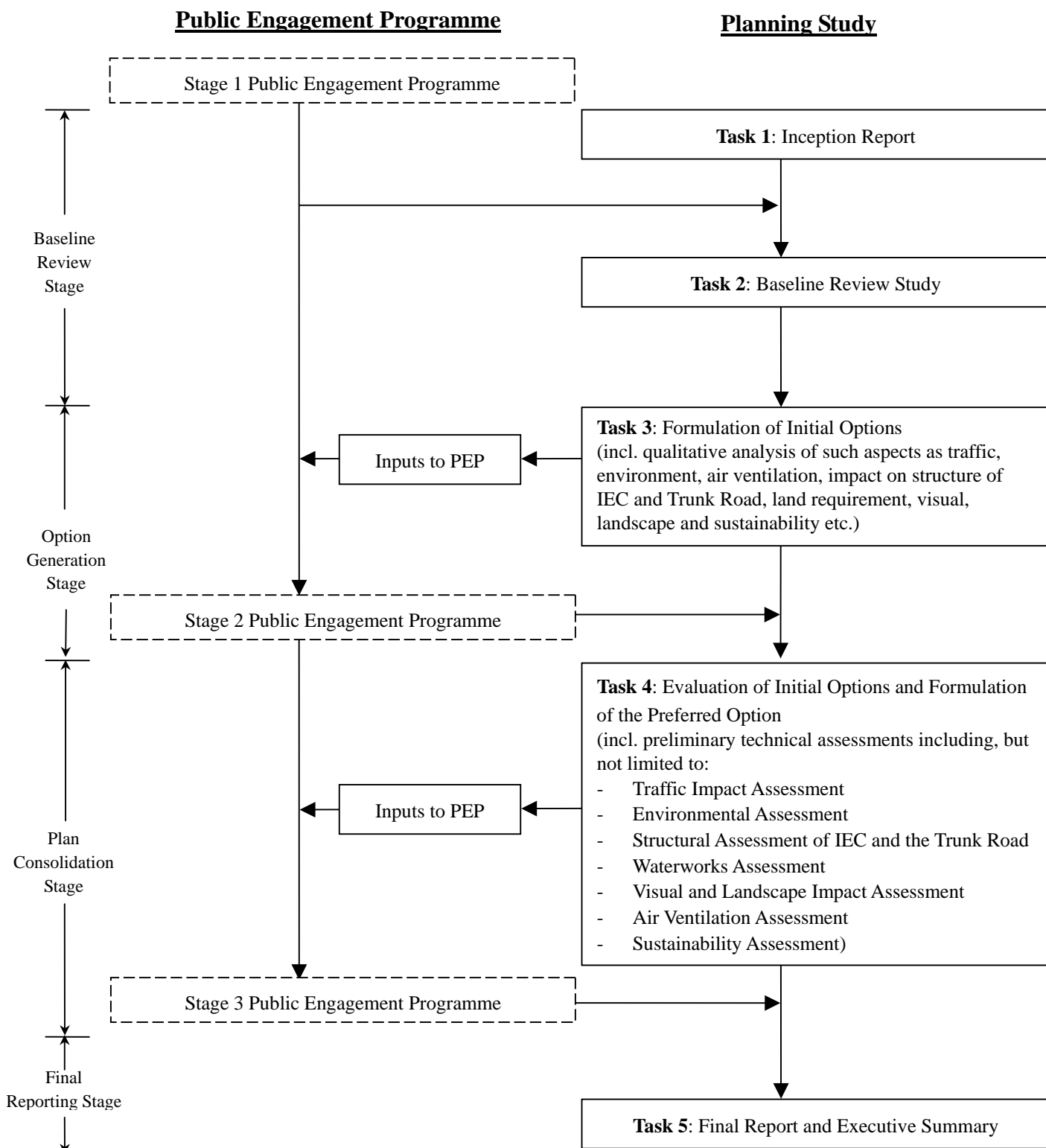
M/SR/08/141_1

DATE : 6/2/2009

Plan 1

Hong Kong Island East Harbour-front Study

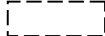
Flow Chart of Key Tasks



Legend



Tasks to be undertaken by the Study Consultants under the Subject Assignment



Tasks to be undertaken by the public engagement specialists under separate assignments

**Hong Kong Island East Harbour-front Study
Outline Study Programme**

	Study Month																	
	1	2	3	4	5	6	7	8	9	10	11	12	13	14	15	16	17	18
Baseline Review Stage (Tasks 1 and 2)																		
1. Draft Inception Report	█																	
2. Working Paper (WP) on Baseline Review	█	█																
3. Circulate and Prepare R-to-C for Draft Inception Report and Draft WP on Baseline Review		█	█															
4. 1st Steering Group Meeting			▼															
5. Final Inception Report and Final WP on Baseline Review			█															
Option Generation Stage (Task 3)																		
6. Draft WP on Formulation of Initial Options		█	█	█														
7. Circulate and Prepare R-to-C for Draft WP on Formulation of Initial Options				█														
8. 2nd Steering Group Meeting					▼													
9. CPLD Submission					█													
10. Final WP on Formulation of Initial Options						█												
Plan Consolidation Stage (Task 4)																		
11. WP on Formulation of Preferred Option									█	█								
12. Circulate and Prepare R-to-C for Draft WP on Formulation of Preferred Option										█								
13. 3rd Steering Group Meeting											▼							
14. CPLD Submission											█							
15. Final WP on Formulation of Preferred Option												█						
Final Reporting Stage (Task 5)																		
16. Draft Final Report and Draft Executive Summary													█	█				
17. Circulate and Prepare R-to-C for Draft Final Report and Draft Executive Summary															█			
18. 4th Steering Group Meeting																	▼	
19. CPLD Submission																	█	
20. Final Report and Final Executive Summary																		█
Other Tasks (Tasks 6, 7 and 8)																		
21. Inputs to Public Engagement Programme				█	█	█	█	█			█	█	█	█				
22. Production of 3D Digital Model and 3D Animations			█	█	█	█	█				█	█			█			
23. Production of Physical Model(s) (Reimbursable Item)					█	█					█	█			█			

▼ Steering Group Meeting