

**Harbour-front Enhancement Committee
Sub-committee on Harbour Plan Review**

Cycle Track between Tsuen Wan and Tuen Mun - Investigation

Purpose

1. This paper is to introduce the public works project namely “Cycle Track between Tsuen Wan and Tuen Mun – Investigation” to, and seek views and comments from Sub-committee Members on the Tsuen Wan Section of the cycle track within Victoria Harbour.

Background

2. The Government has planned to provide a comprehensive cycle track network in the New Territories by connecting individual sections of existing cycle tracks. The proposed cycle track network broadly comprises an artery with a total length of 82 kilometres (km) made up of the following two sections:-

- i) Tuen Mun – Ma On Shan Section
- ii) Tsuen Wan – Tuen Mun Section

3. Ove Arup and Partners HK Limited (Arup) was appointed by the Civil Engineering and Development Department (CEDD) to undertake the investigation study of the cycle track between Tsuen Wan and Tuen Mun. The study commenced in September 2008.

General Scope of Works

4. Scope of works for the Cycle Track between Tsuen Wan and Tuen Mun includes:-

- i) Construction of an approximately 22km long and 3.5m to 4m wide cycle track for recreation purpose and provision of associated footpaths and planters where appropriate.
- ii) Provision of entry/exit hubs at Tsuen Wan West, Siu Lam and Sam Shing Hui to accommodate facilities such as cycle rental facilities, repair kiosks, cycle parking supporting facilities, public toilets, refreshment kiosks, first aid kiosks and landscaped sitting out areas.
- iii) Provision of resting places at Sham Tseng, Tai Lam Chung and Gold Coast.

5. The general scope and extent of the proposed works at the Tsuen Wan Section of the cycle track within Victoria Harbour are shown in the attached Drawing No. 25426/HEC/001.

Proposed Alignments

6. The proposed alignments of cycle track in the Tsuen Wan Section are briefly described as follows:-

- The proposed cycle track will route along the harbour-front areas between Tsuen Wan West and Ting Kau and will be constructed either at-grade or in the form of elevated roads on retaining walls or viaducts depending on the existing topography and site constraints.
- An entry/exit hub is proposed at the promenade in Tsuen Wan West.

The alignments of the proposed cycle track in Tsuen Wan Section are presented in the attached Drawings No. 25426/HEC/002 & 003. Three sheets of photographs showing the existing conditions of the Tsuen Wan Section are also attached for reference.

Consideration

7. In the light of achieving a sustainable cycle track development along the harbour-front areas of Victoria Harbour, the following key factors were thoroughly considered and achieved in this Investigation study:-

i) Accessibility

Access point of the proposed cycle track in the Tsuen Wan Section will be provided next to public transport system at Tsuen Wan West with rail station, bus & minibus terminus, taxi stand, etc. Additional signage will be erected to enhance the accessibility of the cycle track.

ii) Connectivity

As footpath will be provided at the promenade in Hoi Hing Road and alongside the cycle track adjoining Tsuen Wan Riviera Park and Tsuen Wan Park, pedestrian linkage between the parks and the proposed footpath will be considered, and besides, the entry/exit hub will also be interconnected by the cycle track and footpath to enhance the connectivity.

iii) Architectural and Landscape Design

At-grade sections along the coastline will be landscaped to enhance the green characters of the cycle track at harbour-front areas. High quality soft landscape and architectural design will be proposed to soften the structural form of viaducts and retaining walls along the coastline. Streetscape design will also be proposed to integrate with the promenade.

iv) Harbour Planning

With the aim to preserving Victoria Harbour, the proposed cycle track and associated entry/exit hub are designed to route along the existing land in the Tsuen Wan Section without encroaching on Victoria Harbour.

v) Recreation and Leisure Use

The provision of cycle track and various supporting facilities within associated entry/exit hub will enrich the value on leisure and recreation use of harbour-front areas at Tsuen Wan West.

Facility kiosks and landscaped sitting-out area will be designed to enhance public enjoyment along the promenade at Tsuen Wan West.

vi) Public Consultation

General public were consulted at an early stage of this Investigation study to engage their views on the proposed cycle track project.

The public consultation activities are in progress with a view to formulating a preferred alignment option. A public consultation forum was convened on 7 February 2009 to collect public views on the preliminary alignment options for the cycle tracks. Views, support and consensus from the general public were attained.

In January 2009, we consulted Tuen Mun District Council and Tsuen Wan District Council and acquired support from both district councils. We also consulted Tuen Mun South-east Area Committee and local representatives from Tsuen Wan in February 2009 and received positive responses from the participants.

Implementation

8. It is envisaged that the works will commence in stages from 2011 and complete in stages from 2013.

Advice Sought





9. Members are welcome to give views on the Tsuen Wan Section of the project “Cycle Track between Tsuen Wan and Tuen Mun - Investigation”.

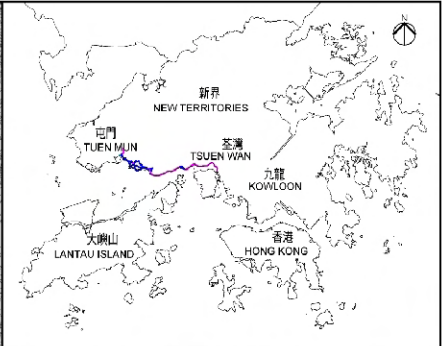
Attachment

10. Figures and photos are attached to this document for reference.

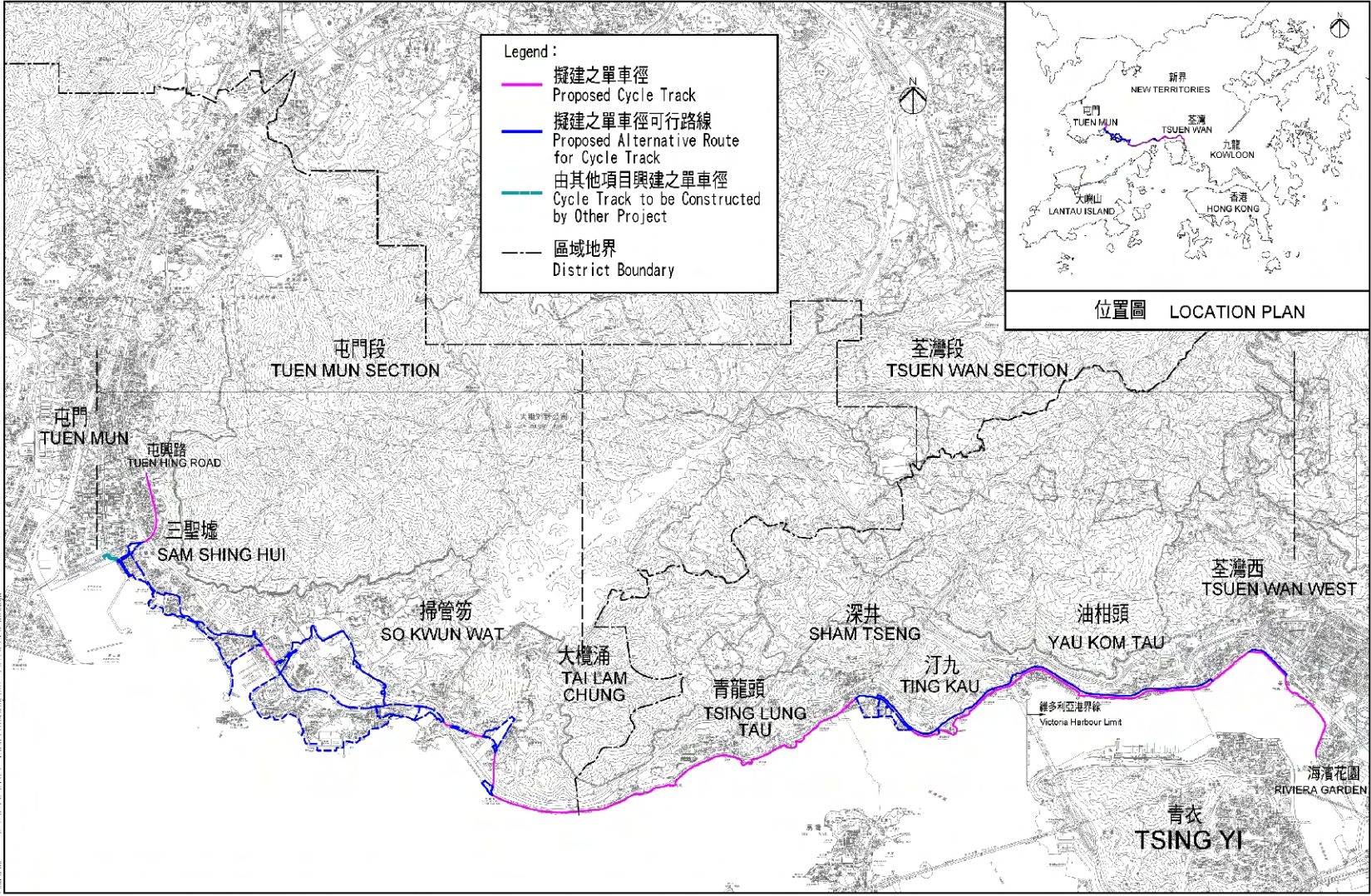
New Territories North and West Development Offices
Civil Engineering and Development Department
March 2009

Legend :

-  擬建之單車徑
Proposed Cycle Track
-  擬建之單車徑可行路線
Proposed Alternative Route for Cycle Track
-  由其他項目興建之單車徑
Cycle Track to be Constructed by Other Project
-  區域地界
District Boundary



位置圖 LOCATION PLAN



Drawn by : 2509/256
 Project No. : 2509/256 C/C/F TRKS-S.W/W/W/CAD-25426/HEC-001/000

 **土木工程拓展署**
Civil Engineering and Development Department

 **ARUP**
馬得納工程顧問公司
Cris Arup & Partners
Hong Kong Limited

項目名稱
合約編號 CE9/2008 (HY)
荃灣至屯門單車徑
之調查研究

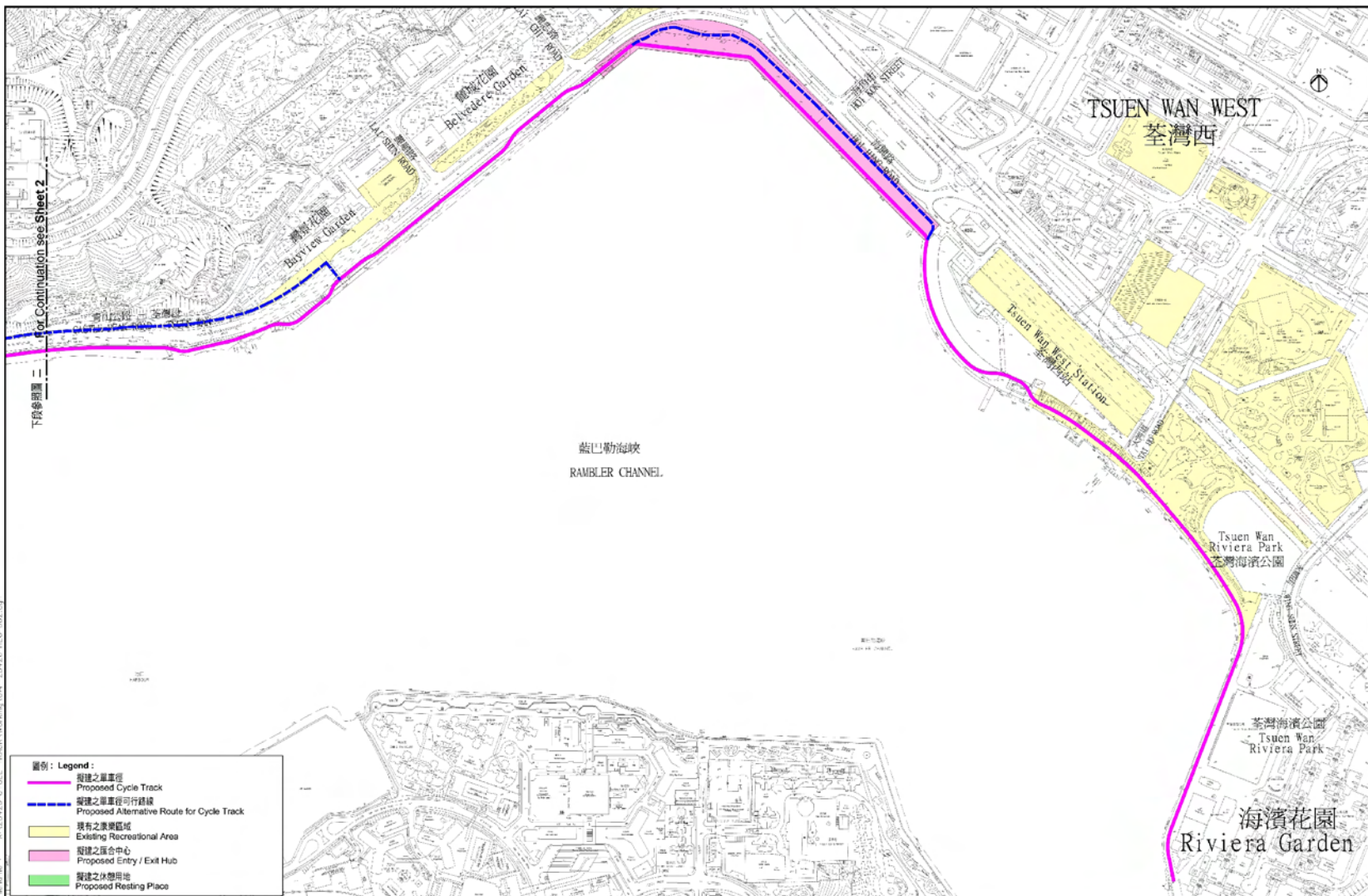
Job Title
Agreement No CE 9/2008(HY)
Cycle Track Between Tsuen Wan
and Tuen Mun - Investigation

繪圖名稱 Drawing Title
擬建之單車徑路線
Proposed Alignment
of Cycle Track

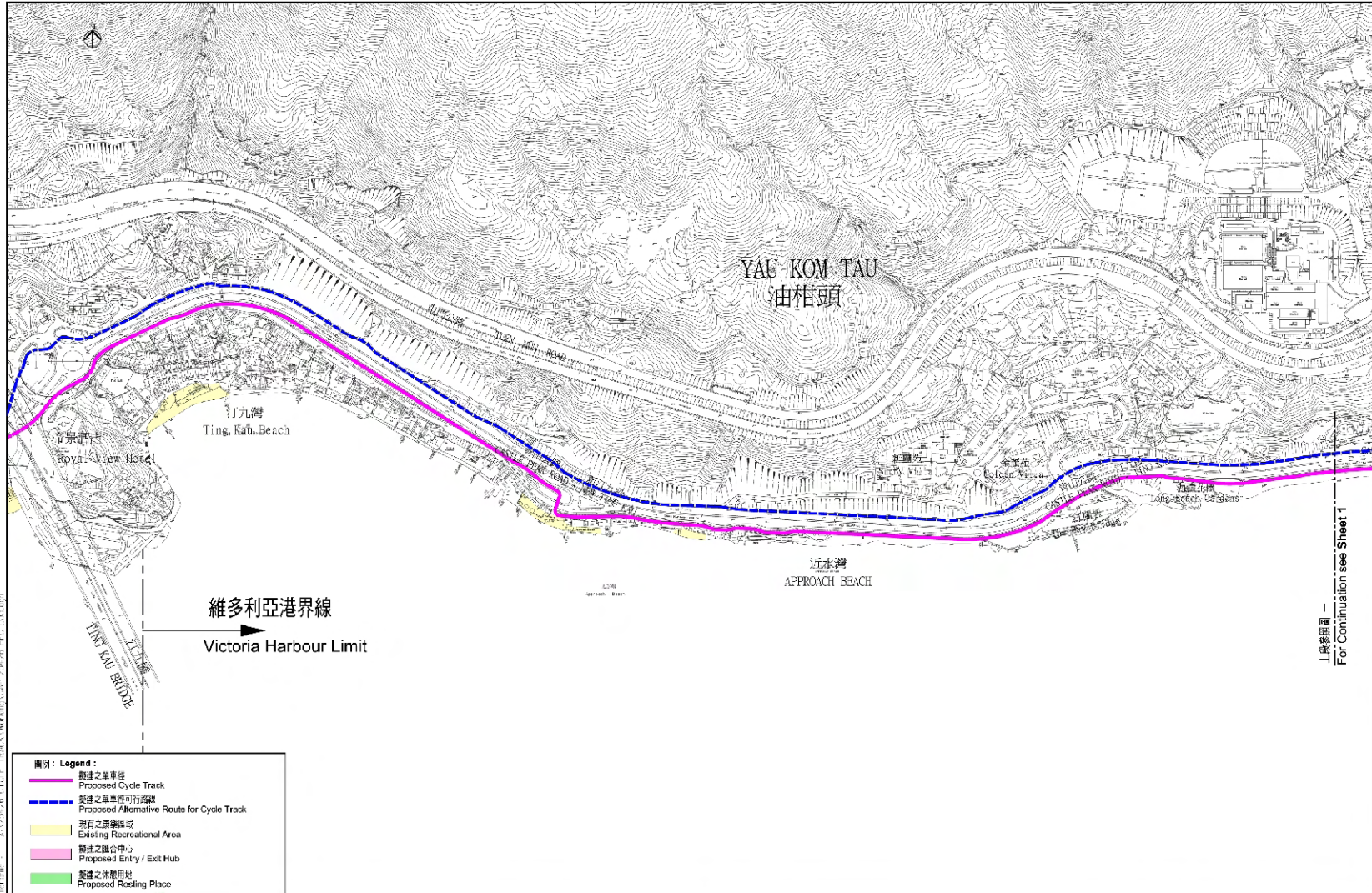
核准人 DYK	審核人 EC	日期 03/09
製圖人 EC	校核人 EC	
圖尺 1:4000		

圖則編號 Drawing No.
25426/HEC/001
Rev.

Printed by: 2008/03/25 09:29:54 AM, L:\2007-2008-CYCLT_TRACK\work\map-25426-HEC-002.dwg



土木工程拓展署 Civil Engineering and Development Department	ARUP 鹿得納工程師有限公司 One Arup & Partners Hong Kong Limited	項目名稱 合約編號CE9/2008 (HY) 荃灣至屯門單車徑 之動查研究 Job Title Agreement No CE 9/2008(HY) Cycle Track Between Tsuen Wan and Tuen Mun -Investigation	圖則名稱 Drawing title 荃灣段單車徑路線 (圖一) Proposed Alignment of Cycle Track in Tsuen Wan Section (Sheet 1)	<table border="1"> <tr><td>日期</td><td></td></tr> <tr><td>繪圖</td><td></td></tr> <tr><td>校核</td><td></td></tr> <tr><td>審核</td><td></td></tr> </table>	日期		繪圖		校核		審核		<table border="1"> <tr><td>圖則</td><td>D1K</td><td>日期</td><td>03/09</td></tr> <tr><td>校核</td><td>EC</td><td>審核</td><td>EC</td></tr> <tr><td>比例尺</td><td colspan="3">1:5000 DN A3</td></tr> <tr><td>比例</td><td colspan="3">比例尺</td></tr> </table>	圖則	D1K	日期	03/09	校核	EC	審核	EC	比例尺	1:5000 DN A3			比例	比例尺			圖則編號 Drawing No. 25426/HEC/002 圖則版本 Rev. 圖則號 Drawing No. 25426/HEC/002 圖則版本 Rev.
日期																														
繪圖																														
校核																														
審核																														
圖則	D1K	日期	03/09																											
校核	EC	審核	EC																											
比例尺	1:5000 DN A3																													
比例	比例尺																													



上接繪圖一
For Continuation see Sheet 1

CEDD 土木工程拓展署
Civil Engineering and Development Department

ARUP 亞答喇工程師有限公司
City Airport & Partners
Hong Kong Limited

項目名稱
合約編號CE9/2008 (HY)
荃灣至屯門單車徑
之調查研究

Job Title
Agreement No CE 9/2008(HY)
Cycle Track Between Tsuen Wan
and Tuen Mun - Investigation

繪圖名稱 Drawing Title
荃灣段單車徑路線 (圖二)
Proposed Alignment of Cycle Track
in Tsuen Wan Section (Sheet 2)

圖號	圖名	比例尺

圖號	01K	日期	03/09
繪圖	EC	繪圖	EC
比例尺	1:5000		

圖號 Drawing No.
25426/HEC/003
圖名 Rev.



Existing Conditions at Tsuen Wan West Section



Existing Conditions at Yau Kom Tau Section



Existing Conditions at Ting Kau Section